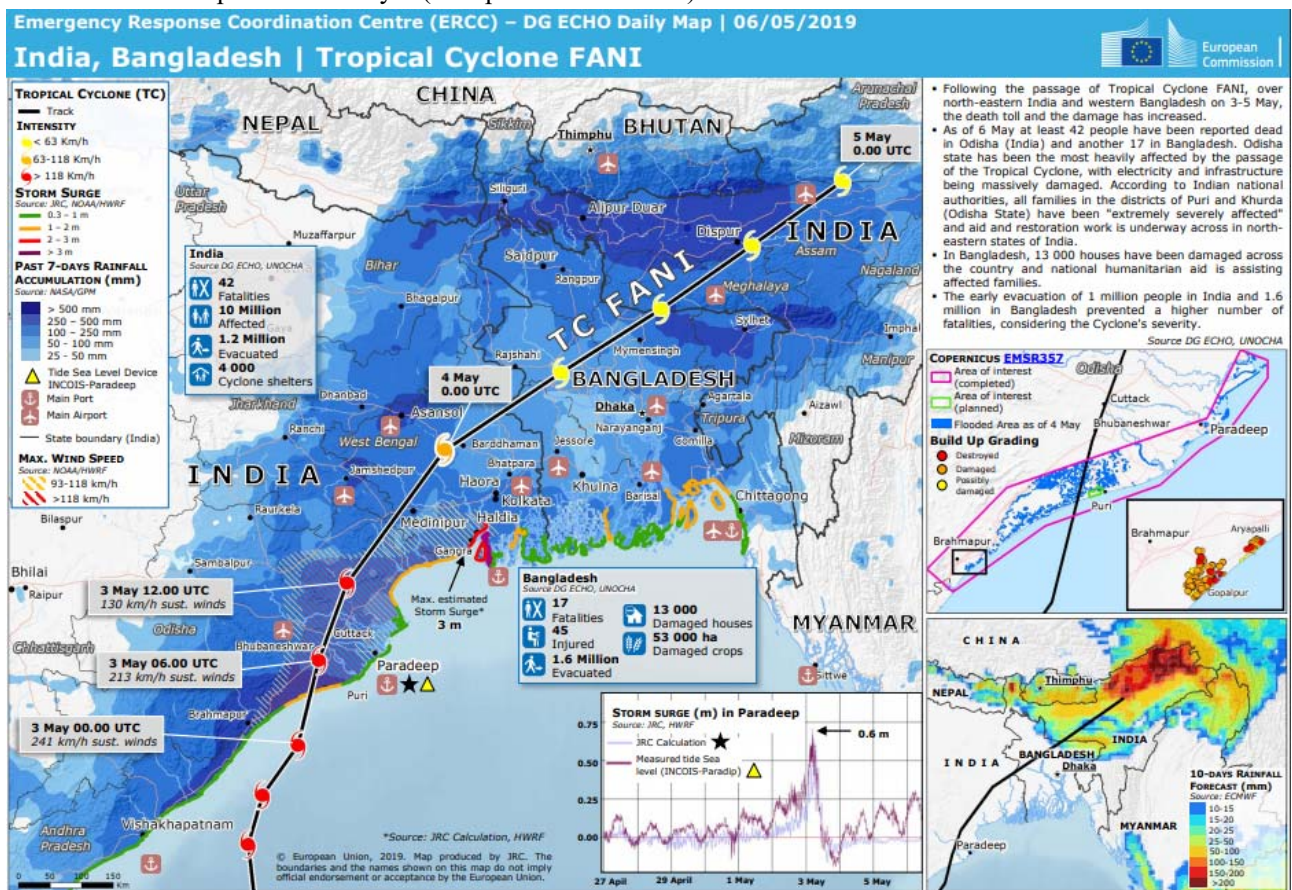


India and Bangladesh Tropical Cyclone FANI

Most Affected Areas	India and Bangladesh	Death Toll	78
	India: Odisha (Puri, Cuttack, Kendrapada and Jagatsinghpur districts), West Bengal and Andhra Pradesh Bangladesh: Khulna and Barisal		India: 64 Bangladesh: 14
Landfall	Landed in Puri, Odisha on May 3, 2019	Missing	No data
Outline	Cyclone Fani, a rare summer cyclone in the Bay of Bengal, hit eastern India and Bangladesh. Storm surges and powerful winds blew off roofs, damaged power lines and uprooted countless trees. The state of Odisha and Bangladesh were praised by United Nations for successful evacuation.		

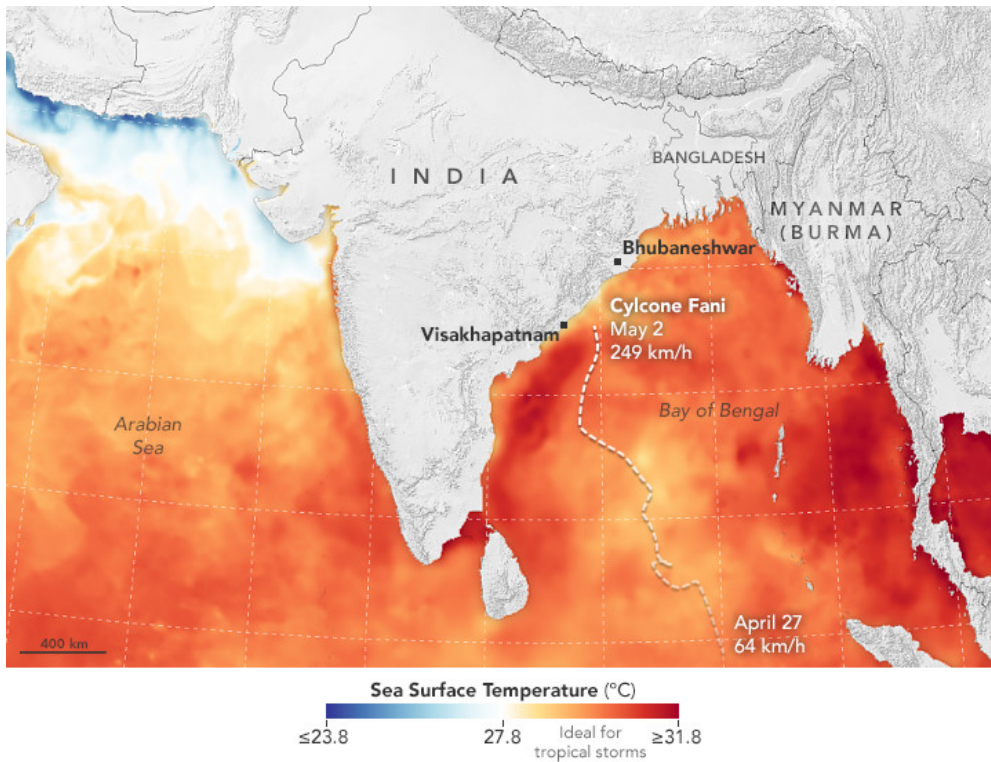
Fani's Path and Impacts as of May 6 (European Commission)



Source: <https://erccportal.jrc.ec.europa.eu/getdailymap/docId/2909>



Sea Surface Temperature as of May 1 (NASA)



Warm sea surface temperatures between 30-31 degrees Celsius along with warm, humid air provided fuel for the storm.

Source: <https://earthobservatory.nasa.gov/images/144992/fani-threatens-india>

Storm Data as of May 3 (WFP)

TROPICAL STORM

EVENT INFO

- Max windspeed:** 213.0 km/h
- Max. Storm Surge:** 1.25 m.
- Current Coordinates:** Lat: 20.2 Lon: 85.8
- Warning ref.:** JTWC - Bulletin #26

PEOPLE LIVING IN AREAS AT RISK

(All Countries Considered)

- 120 km/h windspeed** ● 30,003,987
- 90 km/h windspeed** ● 41,917,770
- 60 km/h windspeed** ● 198,501,645

Tropical Cyclone FANI

STORM CLASSIFICATION

Category 4

WFP WORLD FOOD PROGRAMME PRESENCE

CLOSEST FACILITIES

- Bhubaneswar Sub Office (IND): 7 km on
- Sirajganj Sub Office (BGD): 122 km on 04/05 at 06:00
- Rangpur Sub Office (BGD): 144 km on 04/05 at 18:00
- Khulna Sub Office (BGD): 161 km on 04/05 at 06:00
- Dhaka Country Office (BGD): 186 km on 04/05 at 06:00

CLOSEST HUMANITARIAN RESPONSE DEPOT

- Subang Airport - Kuala Lumpur (MYS): 1316 km on 27/04 at 06:00

Automatically generated alert powered by:

ADAM - Automated Disaster Analysis and Mapping

03 May 2019 | 08:32:19 GMT

A collaboration with JRC

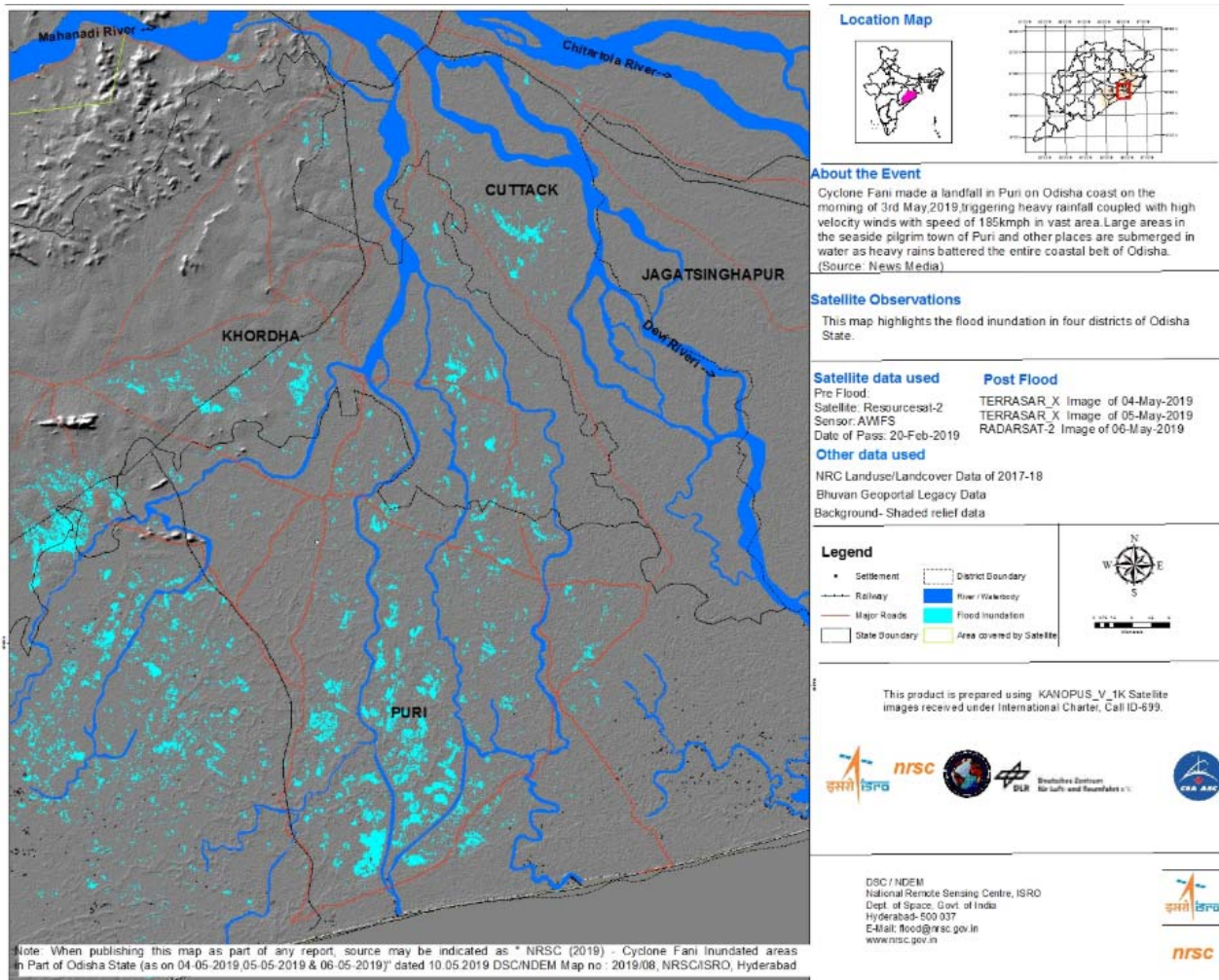
Follow alerts via Twitter: @wfp_adam

WFP Facilities	Wind buffers	Wind speed	Wind speed (forecast)	National Capital
Country Office	120 km/h	< 110 km/h	< 110 km/h	Major Town
Sub Office	90 km/h	110 - 185 km/h	110 - 185 km/h	Intermediate Town
Warehouse	60 km/h	185 - 240 km/h	185 - 240 km/h	Densely Populated Area
	Uncertainty	> 240 km/h	> 240 km/h	

Source: http://www.gdacs.org/contentdata/maps/adam/TC/1000561/adam_ts_1000561_26_20190503083013.jpg



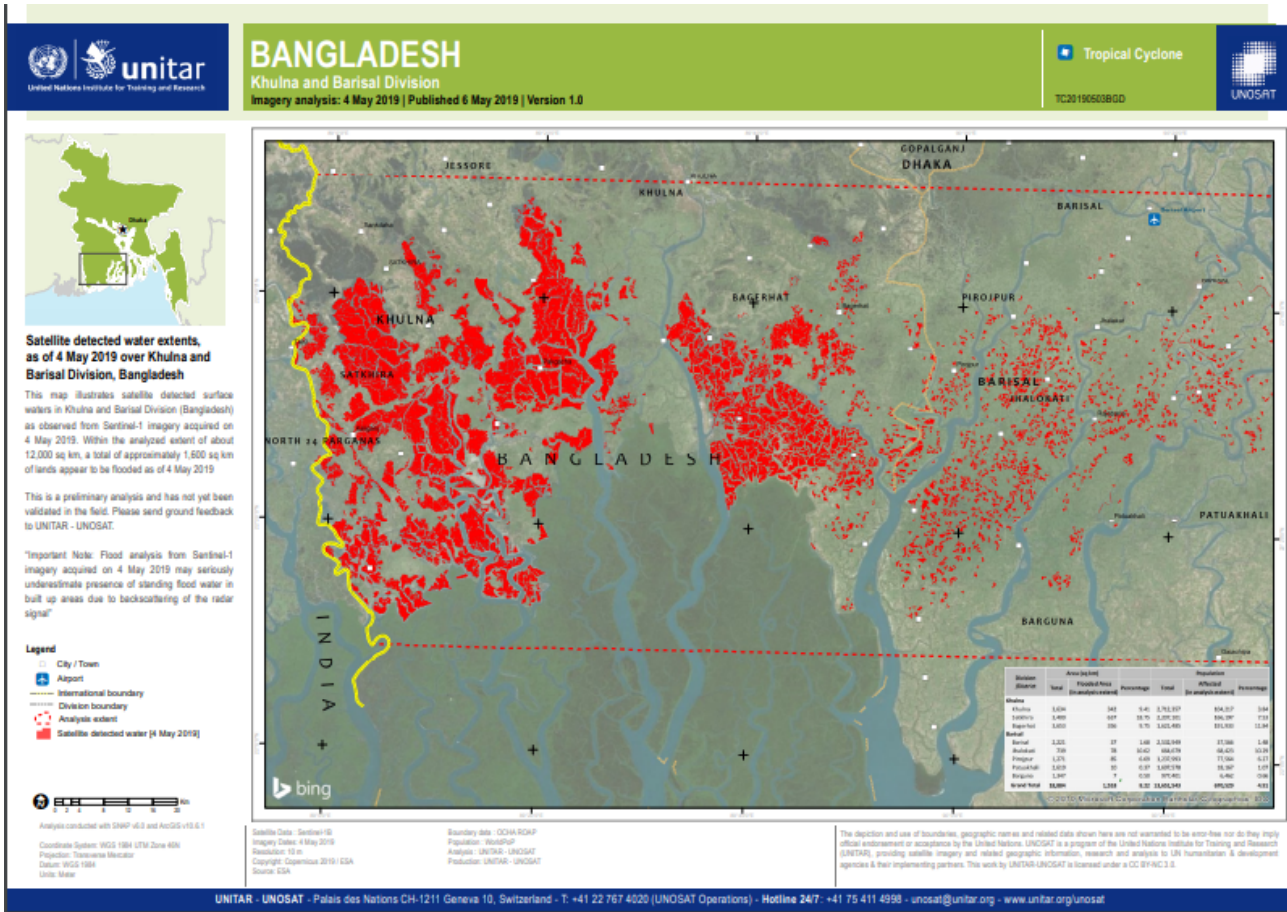
Inundation in Odisha as of May 6 (International Charter)



Source: https://disasterscharter.org/image/journal/article.jpg?img_id=1855449&t=1557729905318



Flooded Area (red) in Bangladesh as of May 4 (United Nations)



Source:

https://reliefweb.int/sites/reliefweb.int/files/resources/UNOSAT_Flood_Overview_Khulna_Barisal_Bangladesh_TC20190503BGD.pdf

